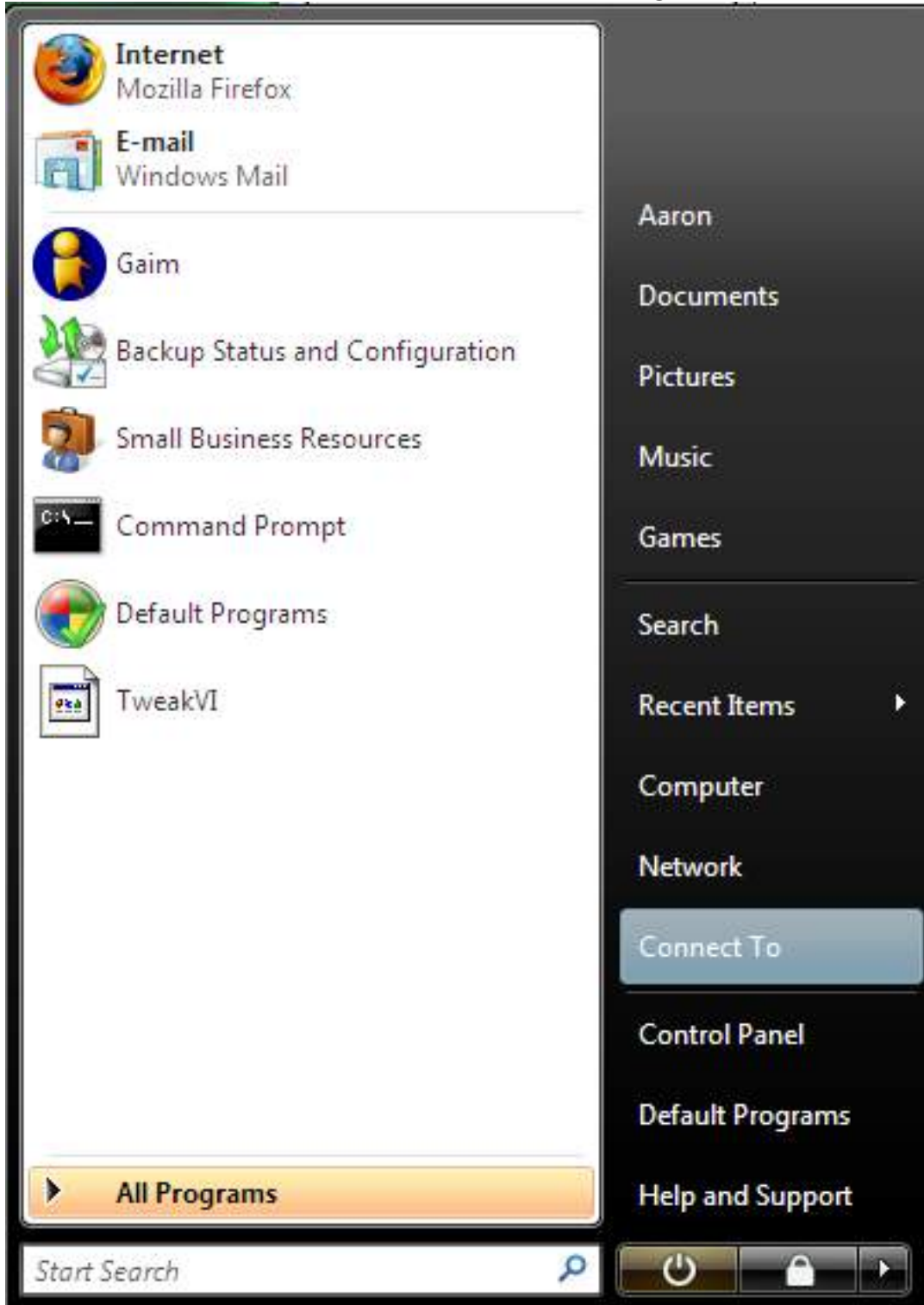


Dial-up Internet

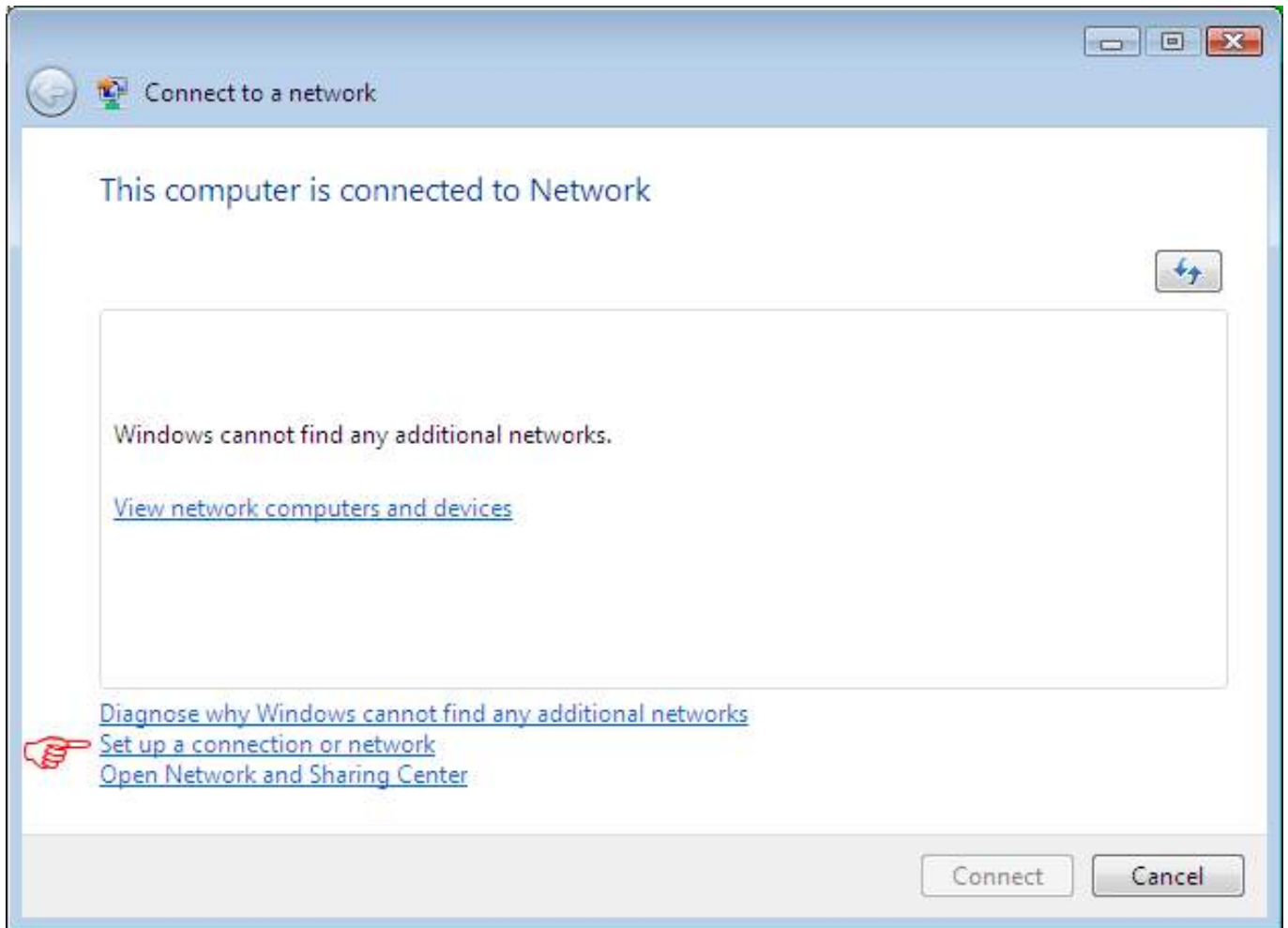
How do I create a dialup connection under Windows Vista and Windows 7?

1.) To start, click on the Start button and then go to Connect To.



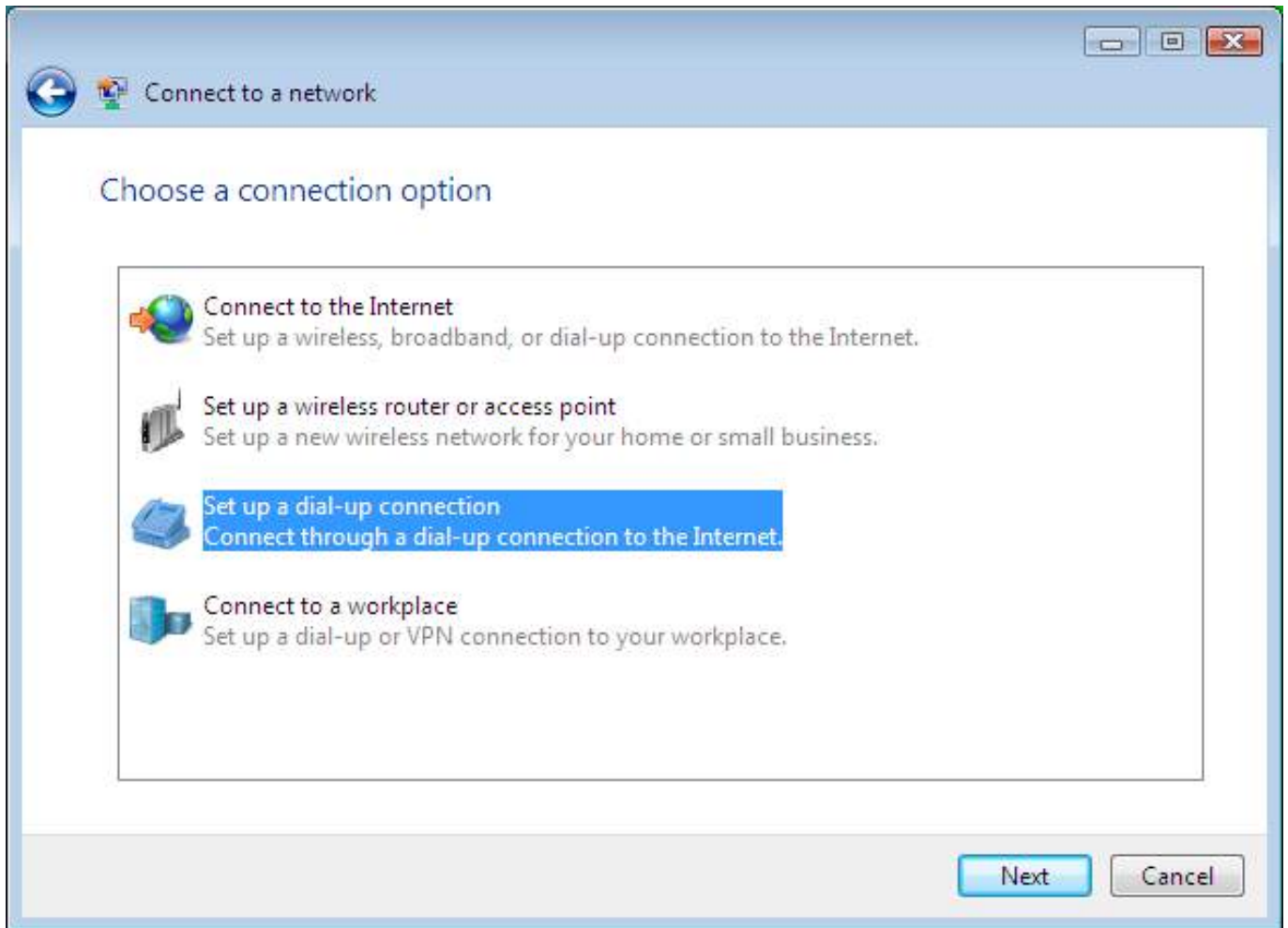
2.) Next, click on "Setup a connection or network" found towards the bottom of the new window.

Dial-up Internet



3.) Click on "Setup a dial-up connection" and then click the Next button.

Dial-up Internet



4.) Enter your local IgLou access number (check [here](#) to find a number in your area), your IgLou username, and password in the appropriate fields. In the "Connection Name" field, enter IgLou. When you are finished, click on the Create button to save your new dial-up connection.

Dial-up Internet

Set up a dial-up connection

Type the information from your Internet service provider (ISP)

Dial-up phone number: [Phone number your ISP gave you] [Dialing Rules](#)

User name: [Name your ISP gave you]

Password: [Password your ISP gave you]

Show characters

Remember this password

Connection name: IgLou

Allow other people to use this connection
This option allows anyone with access to this computer to use this connection.

[I don't have an ISP](#)

Create Cancel

Dial-up Internet

Set up a dial-up connection

Type the information from your Internet service provider (ISP)

Dial-up phone number: [Phone number your ISP gave you] [Dialing Rules](#)

User name: [Name your ISP gave you]

Password: [Password your ISP gave you]

Show characters

Remember this password

Connection name: IgLou

Allow other people to use this connection
This option allows anyone with access to this computer to use this connection.

[I don't have an ISP](#)

Create Cancel

5.) To use this connection, simply click on your Start Menu, and click on Connect To again. You should now see your new IgLou connection.

Unique solution ID: #1021
Author: IgLou Customer Support
Last update: 2016-12-07 21:46